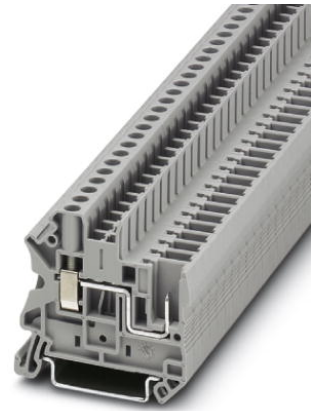


UT 4/ 1P

Order No.: 3045583

<http://eshop.phoenixcontact.de/phoenix/treeViewClick.do?UID=3045583>

Pluggable screw terminal for mounting on NS 35

Commercial data

EAN	4046356083096
Pack	50 Pcs.
Customs tariff	85369010
Weight/Piece	0.009298 KG
Catalog page information	Page 199 (CL-2007)

Product notesWEEE/RoHS-compliant since:
10/10/2005

<http://www.download.phoenixcontact.com>
Please note that the data given here has been taken from the online catalog. For comprehensive information and data, please refer to the user documentation. The General Terms and Conditions of Use apply to Internet downloads.

Technical data**General**

Number of levels	1
Number of connections	2
Color	gray
Insulating material	PA
Inflammability class acc. to UL 94	V0

Dimensions

Width	6.2 mm
Length	47.6 mm
Height NS 35/7,5	47.5 mm
Height NS 35/15	55 mm

Technical data

Maximum load current	32 A (with 6 mm ² conductor cross section)
Rated surge voltage	8 kV
Pollution degree	3
Surge voltage category	III
Insulating material group	I
Connection in acc. with standard	IEC 61 984
Nominal voltage U _N	800 V
Open side panel	ja

Connection data

Conductor cross section solid min.	0.14 mm ²
Conductor cross section solid max.	6 mm ²
Conductor cross section stranded min.	0.14 mm ²
Conductor cross section stranded max.	6 mm ²
Conductor cross section AWG/kcmil min.	26
Conductor cross section AWG/kcmil max	10
Conductor cross section stranded, with ferrule without plastic sleeve min.	0.25 mm ²
Conductor cross section stranded, with ferrule without plastic sleeve max.	4 mm ²
Conductor cross section stranded, with ferrule with plastic sleeve min.	0.25 mm ²
Conductor cross section stranded, with ferrule with plastic sleeve max.	4 mm ²
2 conductors with same cross section, solid min.	0.14 mm ²
2 conductors with same cross section, solid max.	1.5 mm ²
2 conductors with same cross section, stranded min.	0.14 mm ²
2 conductors with same cross section, stranded max.	1.5 mm ²

2 conductors with same cross section, stranded, TWIN ferrules with plastic sleeve, min.	0.5 mm ²
2 conductors with same cross section, stranded, TWIN ferrules with plastic sleeve, max.	2.5 mm ²
2 conductors with same cross section, stranded, ferrules without plastic sleeve, min.	0.25 mm ²
2 conductors with same cross section, stranded, ferrules without plastic sleeve, max.	1.5 mm ²
Type of connection	Screw connection
Stripping length	9 mm
Internal cylindrical gage	A4
Screw thread	M 3
Tightening torque, min	0.6 Nm
Tightening torque max	0.8 Nm

Accessories

Item	Designation	Description
Assembly		
3047167	ATP-UT	Partition plate, for visual and electrical separation of terminal groups, width: 2 mm, color: gray
3047154	D-UT 2,5/1P	Cover, width: 2.2 mm, color: gray
0801762	NS 35/ 7,5 CU UNPERF 2000MM	DIN rail, material: Copper, unperforated, height 7.5 mm, width 35 mm, length: 2 m
1207640	NS 35/ 7,5 PERF 755MM	NS 35 DIN rail, height 7.5 mm, length 755 mm
1207653	NS 35/ 7,5 PERF 955MM	NS35 DIN rail, height 7.5 mm, length 955 mm
1207666	NS 35/ 7,5 PERF 1155MM	NS 35 DIN rail, height 7.5 mm, length 1155 mm
0801733	NS 35/ 7,5 PERF 2000MM	DIN rail, material: Steel, perforated, height 7.5 mm, width 35 mm, length: 2 m
0801681	NS 35/ 7,5 UNPERF 2000MM	DIN rail, material: Steel, unperforated, height 7.5 mm, width 35 mm, length: 2 m
1201756	NS 35/15 AL UNPERF 2000MM	DIN rail, deep-drawn, high profile, unperforated, 1.5 mm thick, material: Aluminum, height 15 mm, width 35 mm, length 2 m
1201895	NS 35/15 CU UNPERF 2000MM	DIN rail, material: Copper, unperforated, 1.5 mm thick, height 15 mm, width 35 mm, length: 2 m
1207679	NS 35/15 PERF 755MM	NS 35 DIN rail, height 15 mm, length 755 mm
1207682	NS 35/15 PERF 955MM	NS 35 DIN rail, height 15 mm, length 955 mm
1207695	NS 35/15 PERF 1155MM	NS 35 DIN rail, height 15 mm, length 1155 mm
1201730	NS 35/15 PERF 2000MM	DIN rail, material: Steel, perforated, height 15 mm, width 35 mm, length: 2 m

1201714	NS 35/15 UNPERF 2000MM	DIN rail, material: Steel, unperforated, height 15 mm, width 35 mm, length: 2 m
1201798	NS 35/15-2,3 UNPERF 2000MM	DIN rail, material: Steel, unperforated, 2.3 mm thick, height 15 mm, width 35 mm, length: 2 m

Bridges

3030336	FBS 2-6	Plug-in bridge for cross-connections in the terminal center, 2-pos., color: Red
3030242	FBS 3-6	Plug-in bridge for cross-connections in the terminal center, 3-pos., color: Red
3030255	FBS 4-6	Plug-in bridge for cross-connections in the terminal center, 4-pos., color: Red
3030349	FBS 5-6	Plug-in bridge for cross-connections in the terminal center, 5-pos., color: Red
3030271	FBS 10-6	Plug-in bridge for cross-connections in the terminal center, 10-pos., color: Red
3030365	FBS 20-6	Plug-in bridge for cross-connections in the terminal center, 20-pos., color: Red
3032224	FBS 50-6	Plug-in bridge for cross-connections in the terminal center, 50-pos., color: Red

General

3022276	CLIPFIX 35-5	Snap-on end bracket, for NS 35/7.5 or NS 35/15 DIN rail, can be fitted with Zack strip ZB 5 and ZBF 5, terminal strip marker KLM 2 and KLM, parking facility for FBS...5, FBS...6, KSS 5, KSS 6, width: 5,15 mm, color: gray
---------	--------------	--

Marking

3040588	PC	Coding for all basic terminal blocks
0811228	X-PEN 0,35	Marker pen without ink cartridge, for manual labeling of markers, labeling extremely wipe-proof, line thickness 0.35 mm
1051016	ZB 6,LGS:FORTL.ZAHLEN	Zack strip, 10-section, printed horizontally: with the numbers, 1-10, 11-20 etc. up to 991-1000, color: white
5060935	ZB 6/WH-100:UNBEDRUCKT	Zack strip, unprinted: For individual labeling with M-PEN, ZB-T or CMS system, large batch, sufficient for labeling 1000 terminal blocks, for a terminal width of 6.2 mm, color: White
1051003	ZB 6:UNBEDRUCKT	Zack strip, unprinted, strips with 10 labels for individual labeling with M-PEN or CMS system, for terminal block width: 6.2 mm, color: white

Plug/Adapter

0201689	MPS-IH BU	Insulating sleeve (blue), for MPS metal part to be ordered separately (0201744)
0201676	MPS-IH RD	Insulating sleeve (red), for MPS metal part to be ordered separately (0201744)

0201663	MPS-IH WH	Insulating sleeve (white), for MPS metal part to be ordered separately (0201744)
0201744	MPS-MT	Test plug, consisting of: Metal part for 2.3 mm diameter socket hole
3030925	PAI-4	Test adapter, for 4 mm diameter test plug PS and safety test plug, makes contact in the bridge shaft
3030996	PS-6	Modular test plug, for individual assembly of test plug strips, for UT, ST, DT and QT terminal blocks, can be labeled with ZBF 6, color: Red

Tools

1205053	SZS 0,6X3,5	Screwdriver, bladed, matches all screw terminal blocks up to 4.0 mm ² connection cross section, blade: 0.6 x 3.5 mm, without VDE approval
---------	-------------	--

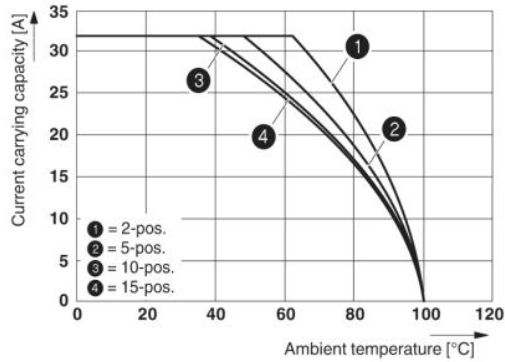
Additional products

Item	Designation	Description
Plug/Adapter		
3060115	UP 4/ 1	UT-COMBI male connector, single, not bridgeable
3060021	UP 4/ 1-L	UT-COMBI male connector, single, not bridgeable
3060034	UP 4/ 1-L BU	UT-COMBI male connector, single, not bridgeable
3060047	UP 4/ 1-L GNYE	UT-COMBI male connector, single, not bridgeable
3060050	UP 4/ 1-M	UT-COMBI male connector, single, not bridgeable
3060063	UP 4/ 1-M BU	UT-COMBI male connector, single, not bridgeable
3060076	UP 4/ 1-M GNYE	UT-COMBI male connector, single, not bridgeable
3060089	UP 4/ 1-R	UT-COMBI male connector, single, not bridgeable
3060092	UP 4/ 1-R BU	UT-COMBI male connector, single, not bridgeable
3060102	UP 4/ 1-R GNYE	UT-COMBI male connector, single, not bridgeable
3060128	UP 4/ 2	UT-COMBI male connector, single, not bridgeable
3060131	UP 4/ 3	UT-COMBI male connector, single, not bridgeable
3060144	UP 4/ 4	UT-COMBI male connector, single, not bridgeable
3060157	UP 4/ 5	UT-COMBI male connector, single, not bridgeable
3060160	UP 4/ 6	UT-COMBI male connector, single, not bridgeable
3060173	UP 4/ 7	UT-COMBI male connector, single, not bridgeable
3060186	UP 4/ 8	UT-COMBI male connector, single, not bridgeable
3060199	UP 4/ 9	UT-COMBI male connector, single, not bridgeable
3060209	UP 4/10	UT-COMBI male connector, single, not bridgeable
3060212	UP 4/11	UT-COMBI male connector, single, not bridgeable

3060225	UP 4/12	UT-COMBI male connector, single, not bridgeable
3060238	UP 4/13	UT-COMBI male connector, single, not bridgeable
3060241	UP 4/14	UT-COMBI male connector, single, not bridgeable
3060254	UP 4/15	UT-COMBI male connector, single, not bridgeable
3045800	UPBV 4/ 1	UT-COMBI male connector, single, bridgeable
3045716	UPBV 4/ 1-L	UT-COMBI male connector, single, bridgeable
3045729	UPBV 4/ 1-L BU	UT-COMBI male connector, single, bridgeable
3045732	UPBV 4/ 1-L GNYE	UT-COMBI male connector, single, bridgeable
3045745	UPBV 4/ 1-M	UT-COMBI male connector, single, bridgeable
3045758	UPBV 4/ 1-M BU	UT-COMBI male connector, single, bridgeable
3045761	UPBV 4/ 1-M GNYE	UT-COMBI male connector, single, bridgeable
3045774	UPBV 4/ 1-R	UT-COMBI male connector, single, bridgeable
3045787	UPBV 4/ 1-R BU	UT-COMBI male connector, single, bridgeable
3045790	UPBV 4/ 1-R GNYE	UT-COMBI male connector, single, bridgeable
3045813	UPBV 4/ 2	UT-COMBI male connector, single, bridgeable
3045826	UPBV 4/ 3	UT-COMBI male connector, single, bridgeable
3045839	UPBV 4/ 4	UT-COMBI male connector, single, bridgeable
3045842	UPBV 4/ 5	UT-COMBI male connector, single, bridgeable
3045855	UPBV 4/ 6	UT-COMBI male connector, single, bridgeable
3045868	UPBV 4/ 7	UT-COMBI male connector, single, bridgeable
3045871	UPBV 4/ 8	UT-COMBI male connector, single, bridgeable
3045884	UPBV 4/ 9	UT-COMBI male connector, single, bridgeable
3045897	UPBV 4/10	UT-COMBI male connector, single, bridgeable
3045907	UPBV 4/11	UT-COMBI male connector, single, bridgeable
3045910	UPBV 4/12	UT-COMBI male connector, single, bridgeable
3045923	UPBV 4/13	UT-COMBI male connector, single, bridgeable
3045936	UPBV 4/14	UT-COMBI male connector, single, bridgeable
3045949	UPBV 4/15	UT-COMBI male connector, single, bridgeable

Drawings

Diagram



The figure shows the derating curve of the UT 4/1P... terminal block in connection with the UPVB 4 connector